

Brace Point Underground Cable Replacement Project

Virtual Community Meeting – August 28, 2025



Seattle City Light

WE POWER SEATTLE

Project Team Introductions



Grant Barton
Public Relations Specialist
Seattle City Light



Natasha Wheeler
Community Communications Officer
Stepherson & Associates



Oliver Classen
Resident Engineer
Seattle City Light



Mike Fernandes
Senior Project Manager
Seattle City Light



Bob Stewart
Supervising Civil Engineer
Seattle City Light



Brett Franceschina
Project Manager
KC Equipment LLC



Francis Sammy
Electrical Power Systems Engineer
Seattle City Light

Definitions and Project Background



Seattle City Light



WE POWER SEATTLE

Common Terms



Electrical Vault

Underground room that provides access to electrical equipment (transformers, cables, etc.)



Electrical Conduit

Tubes used to protect electrical cables from weather, animals, etc.

Project Background

- + Over 590 miles of underground electrical cables in our service area
- + Direct-buried cables were installed in the 1970s (without electrical conduit)
- + Overtime, the cables may be damaged by weather, animals, age, etc.
 - Cable failures can cause long unplanned outages, like those that have happened in the Brace Point area.

Project Overview

Construction Details





Project Impacts

During construction, customers can expect:

- + Limited parking and sidewalk access.
- + Limited driveway access to houses closest to active work areas. Vehicles will be able to pass during non-working hours.
- + Traffic signs and flaggers redirecting pedestrian and vehicle traffic to maintain safety.
- + Traffic delays near active work areas.
- + Some equipment noise during work hours.
- + Restoration to follow SDOT guidelines.
- + City Light's Resident Engineer onsite daily to monitor project activities.

Additional Details

- + Crews will secure the work area for safe travel outside work hours.
- + **Planned power outages are required to do this work safely.** We typically notify affected residents at least five days before any planned outages. We expect planned outages to happen in spring 2027.
- + We will work closely with the Seattle Department of Transportation (SDOT) Urban Forestry group to protect trees and mitigate any removals.
- + This project will not interrupt regular mail delivery, garbage, recycling, yard waste, or other services.
- + No action is needed by the homeowner to maintain power to their home. If a customer wants to upgrade or add service, the homeowner is responsible for installation on private property.

Construction Methods

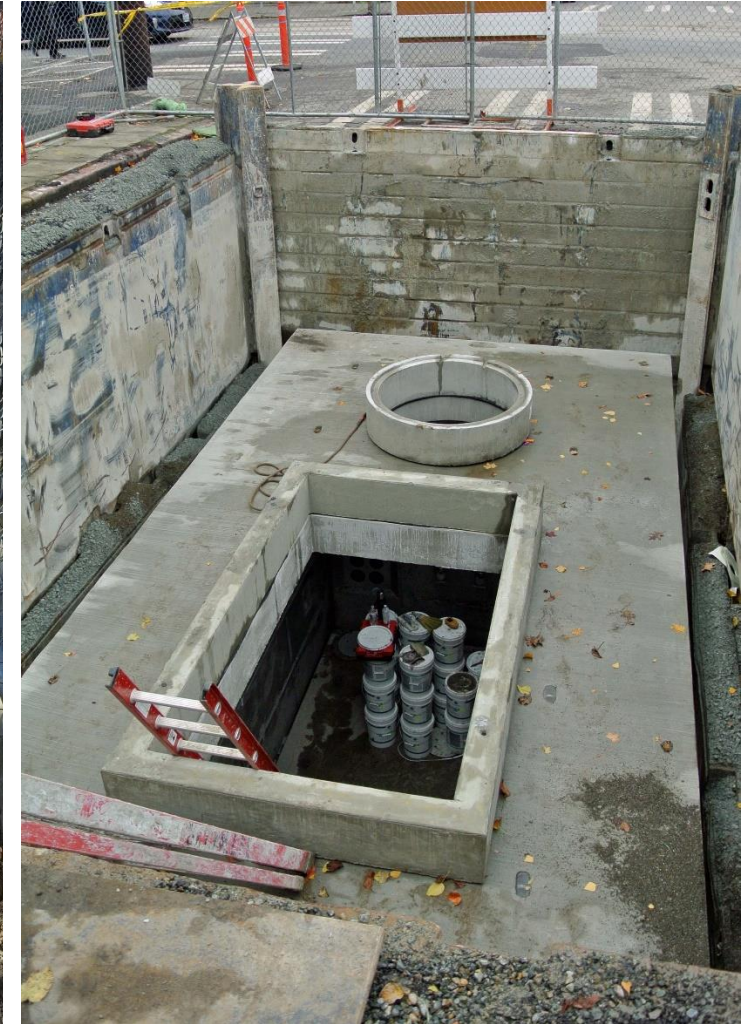
+ Preliminary Construction Activities

- Survey right-of-way
- Surface locate underground utilities
- Deliver equipment and construction materials

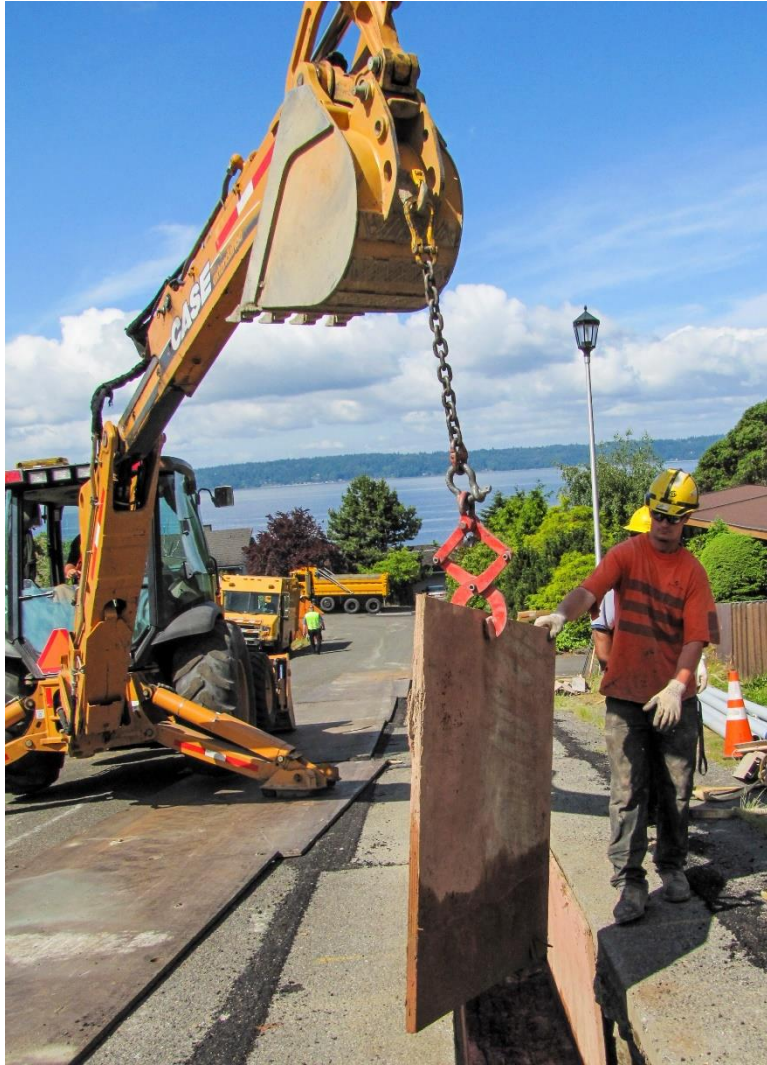
+ Major Construction Activities

- Physically locate underground utilities
- Sawcut pavement for trenching
- Excavate trench for conduit
- Install conduit
- Backfill trench
- Restore pavement and landscaping

Construction



Construction



Project Schedule

Construction Start Date

August 2025

Estimated Completion

Civil construction: Fall 2026
Electrical work: Spring 2027

Work Hours

Monday - Friday, 7 a.m. - 5:30 p.m.



Questions?

Please submit your questions in the Q&A section.



Seattle City Light



WE POWER SEATTLE

Stay Connected

Contact us for questions:

NATASHA WHEELER

Community Communications Officer
(206) 312-0021

bracepointcable@stephersonassociates.com
seattle.gov/city-light/current-projects



+ Subscribe to our email list: bit.ly/scl-bracepoint

THANK YOU



Seattle City Light