



PLANNING FOR THE FUTURE

Seattle City Light's Integrated Resource Plan

Anna Kim / Saul Villareal | June 9, 2016



WHY IS CITY LIGHT HERE

- **Inform you** on how City Light plans for the future with the Integrated Resource Plan
- **Engage you** on the planning process
- **Invite you** to learn more and share your suggestions

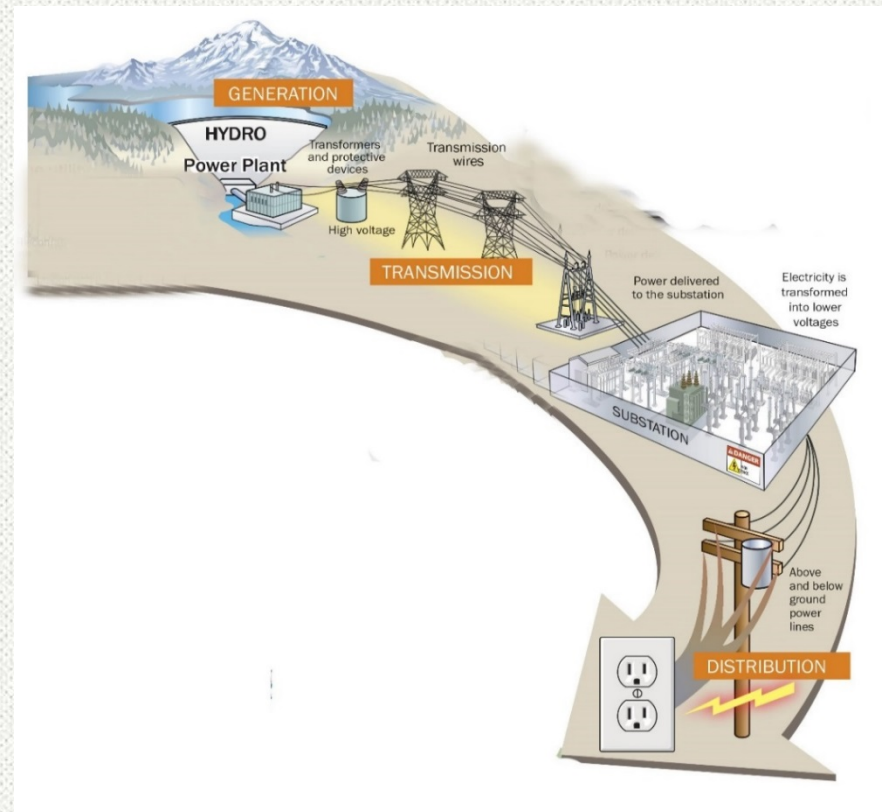


PLANNING AHEAD

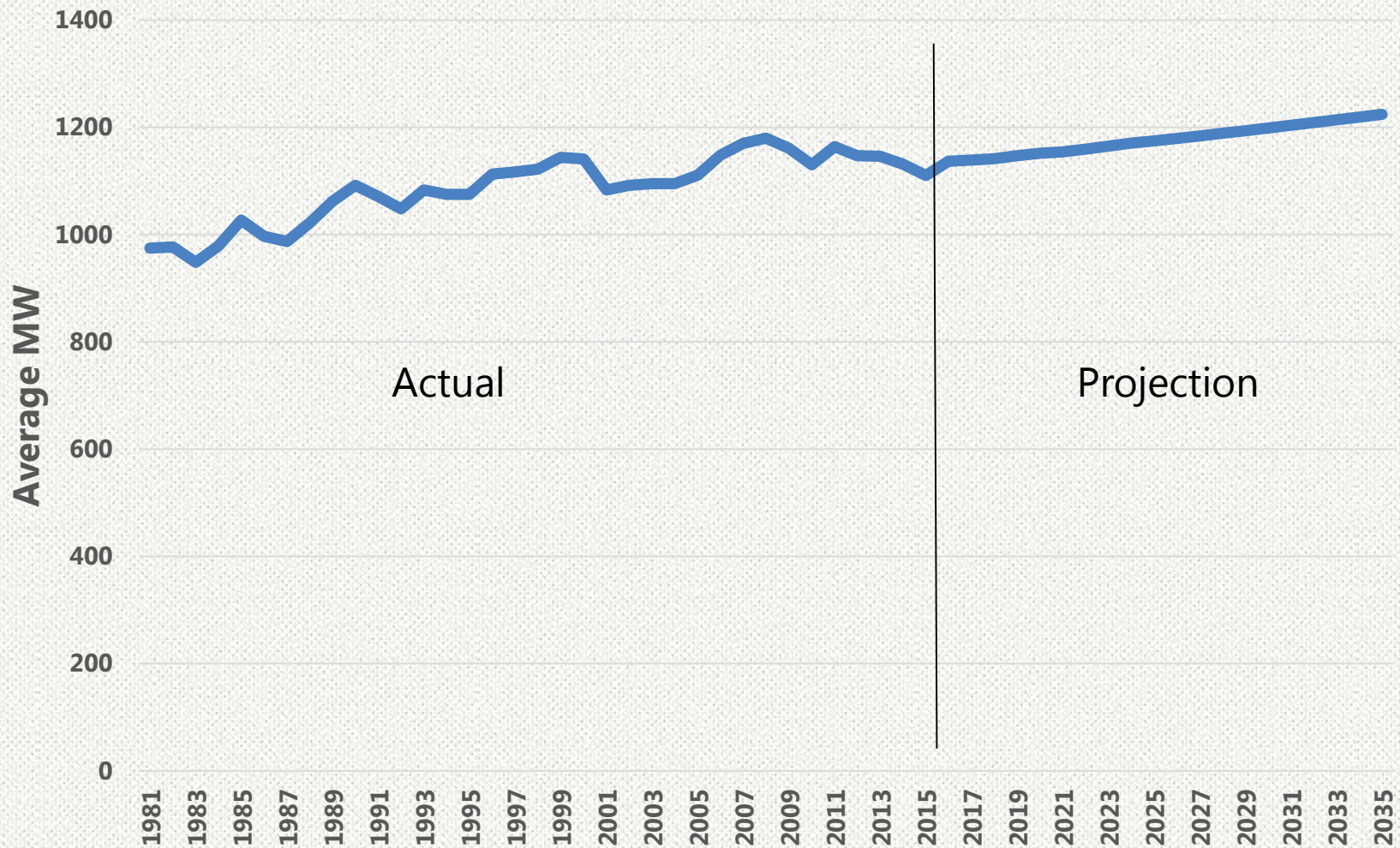
Integrated Resource Planning is how City Light plans to meet customer energy needs for the next **20 years**

The plan looks at:

- What City Light will need
- What City Light has
- How City Light makes power supply decisions
- *Strategy updated every two years*

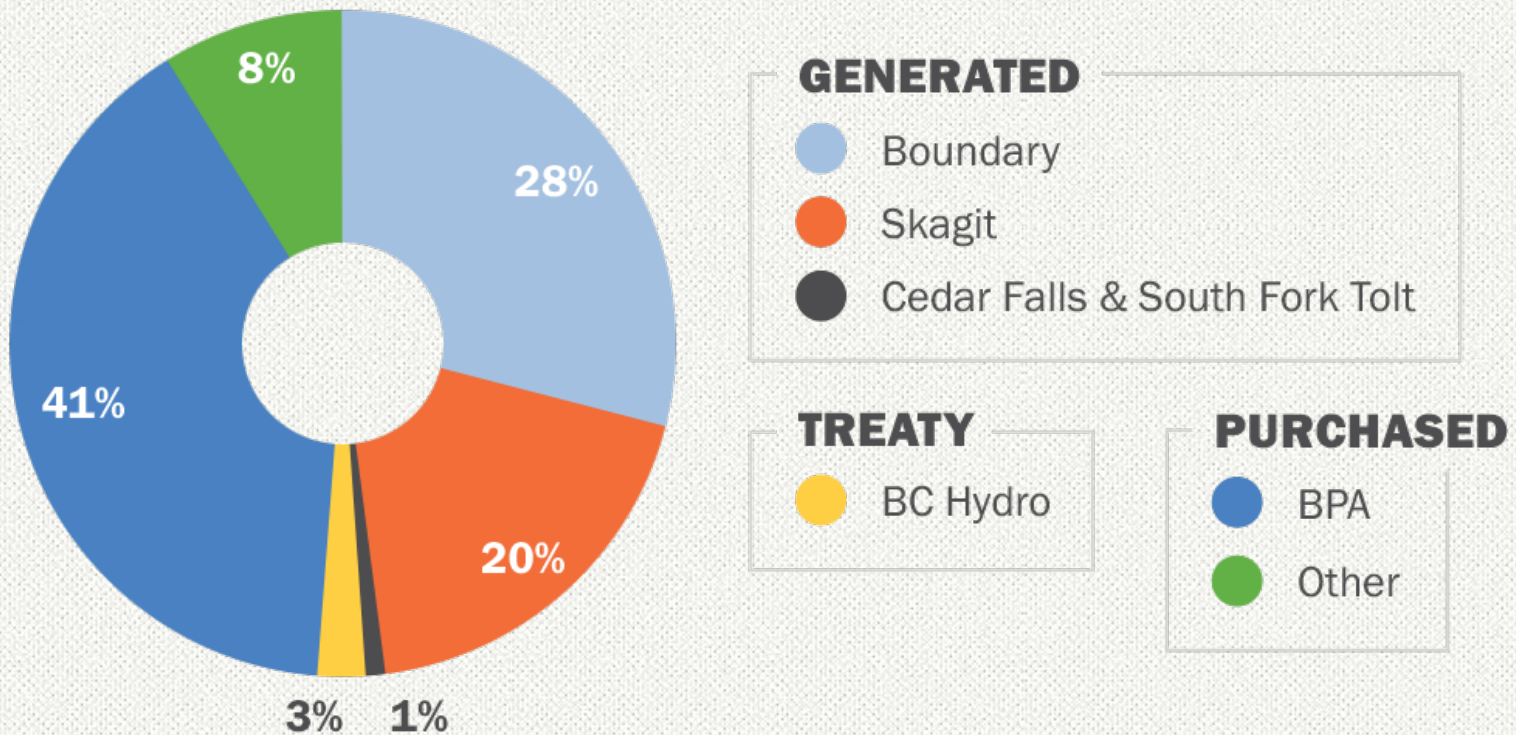


WHAT CITY LIGHT WILL NEED: ENERGY DEMAND FORECAST

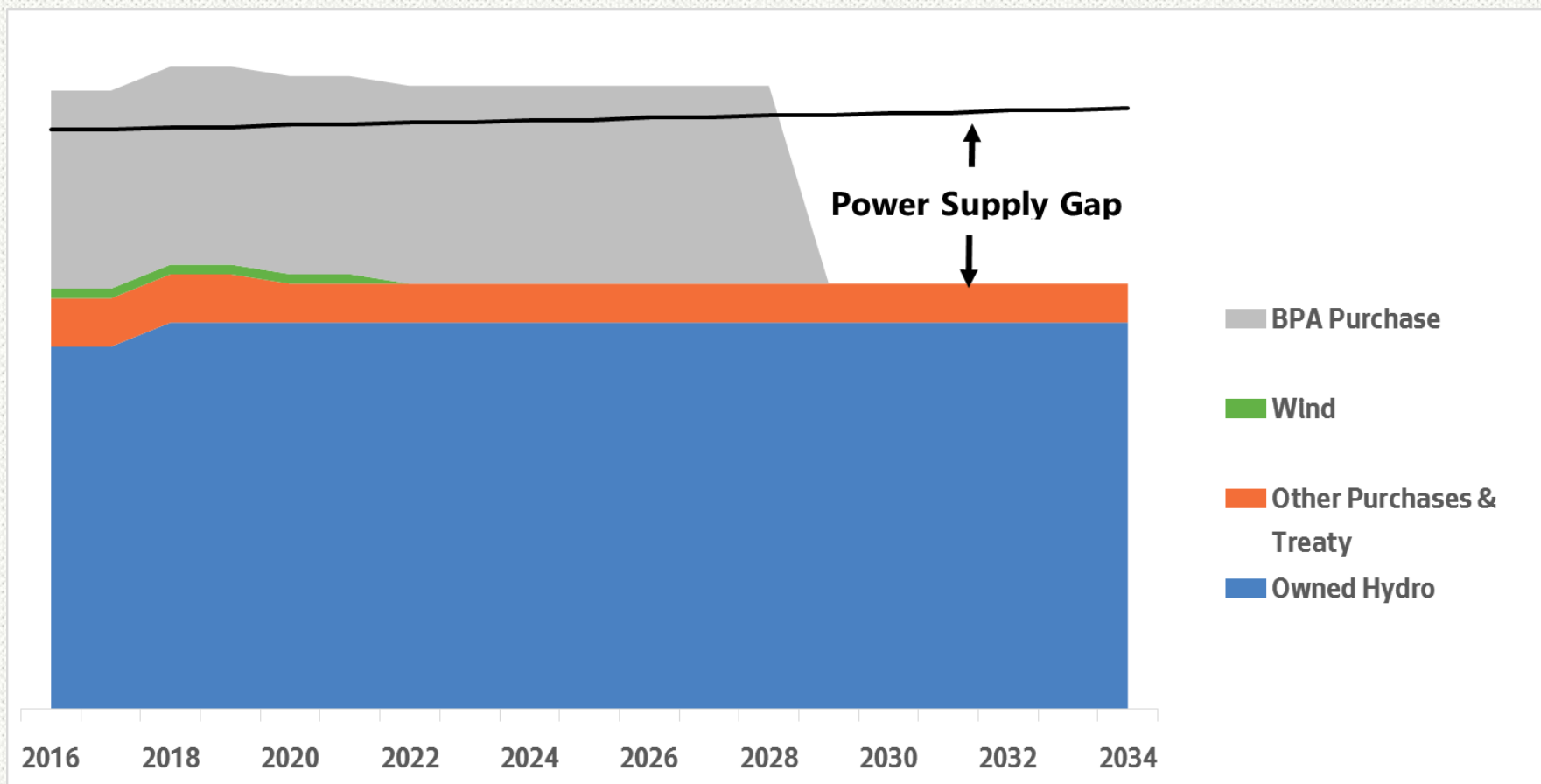


WHAT CITY LIGHT HAS: BY SOURCE

Current Sources of Power



PORTFOLIO BUILDING BLOCKS: RESOURCE NEED



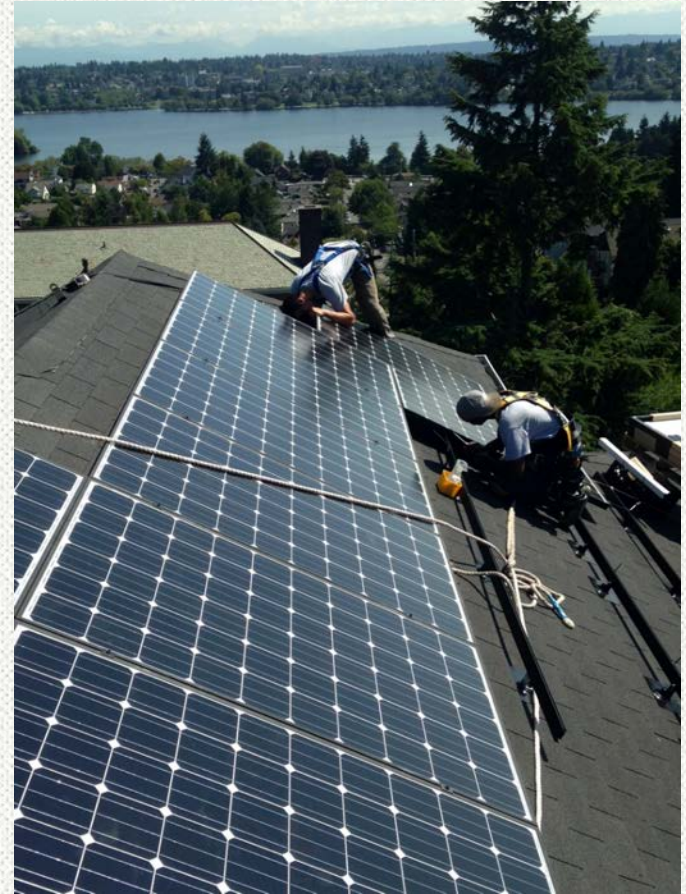
HOW CITY LIGHT MAKES SUPPLY DECISIONS: POLICIES

- Conservation first
- Renewable resources to meet city policy and renewable portfolio standards
- Maintain greenhouse gas neutrality



HOW CITY LIGHT PICKS THE BEST PLAN

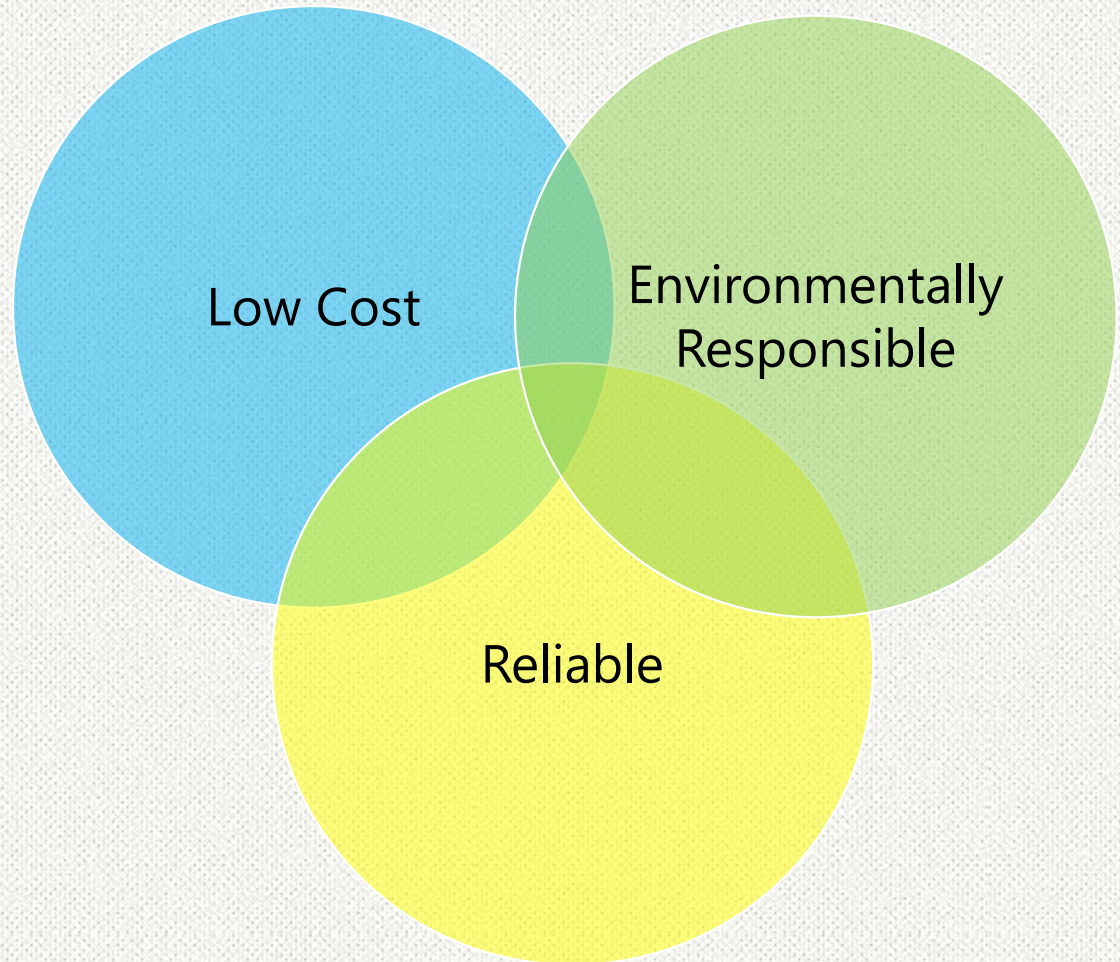
- Develops energy strategies
- Compares the performance of different energy strategies under a range of future situations
- **Customer feedback – City Light wants to hear from you**



FEEDBACK

Which are the most important considerations for you:

- Environment
- Reliability
- Cost
- Other



JOIN THE DISCUSSION

Online Open House Video

- Visit <http://www.seattle.gov/light/news/issues/irp/> to watch

Feedback – Let City Light know what is important to you

- Email SCL.IRP@seattle.gov
- Phone contact:
 - **Aliza Seelig**, Resource Planning Forecasting and Analysis Manager | (206) 684-8458
 - **Anna Kim**, Power Resource Planner | (206) 727-8720

THANK YOU

Questions?



CITY LIGHT

OUR VISION

To set the standard—to deliver the best customer service experience of any utility in the nation.

OUR MISSION

Seattle City Light is dedicated to exceeding our customers' expectations in producing and delivering environmentally responsible, safe, low-cost and reliable power.

OUR VALUES

Excellence, Accountability, Trust and Stewardship.

